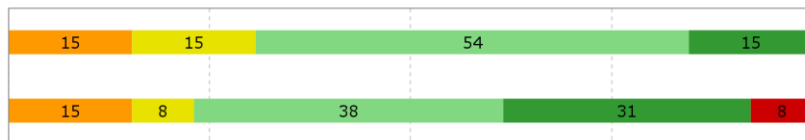




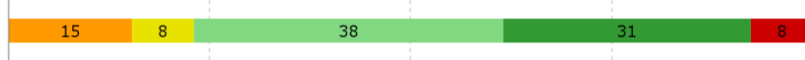
Semester evaluation  
ArT Study Board  
Spring 2015:ArT 4  
12 complete, 1 reduced answers  
Response rate 59%:

Course objectives - At each module start the study programme clearly informed the students about the targets for the module



13

Course objectives - I studied the learning objectives for the individual modules



13

0% 25% 50% 75% 100%  
 1 Totally disagree 2 3 4 5 Totally agree No basis for evaluation

How many hours weekly did you on average spend on your studies this semester?

- 12

13-19

20-26

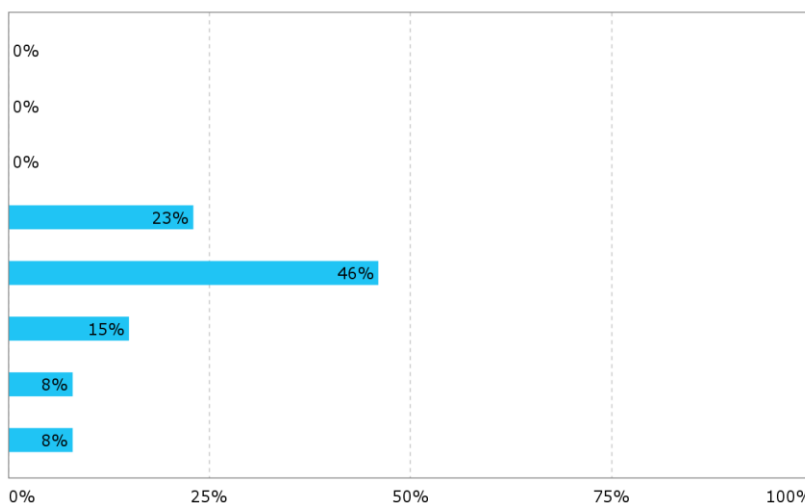
27-33

34-40

41-47

48-54

55-



0

0

0

3

6

2

1

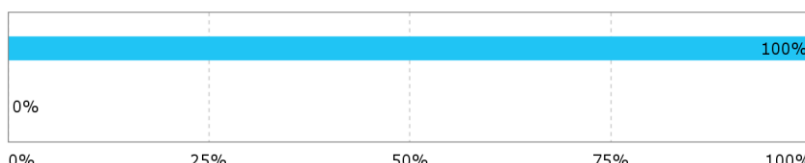
1

0% 25% 50% 75% 100%

I prepared a project or I participated in preparing a project this semester

Yes

No



13

0

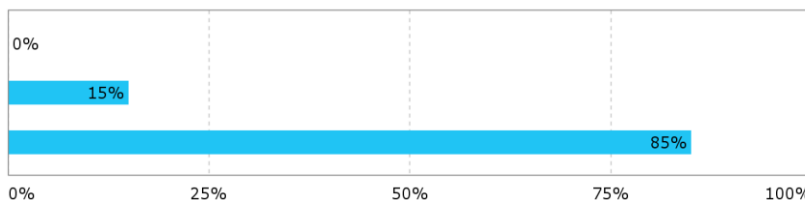
0% 25% 50% 75% 100%

I prepared the project together with other students

No, individually

Yes, in a group of 2-3 persons

Yes, in a group of 4 or more persons



0

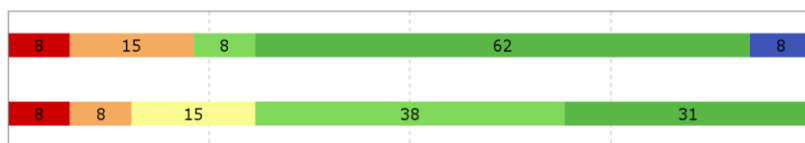
2

11

0% 25% 50% 75% 100%

- The group formation process proceeded appropriately

- The cooperation of the group was good and contributed to achieving the learning objectives



13

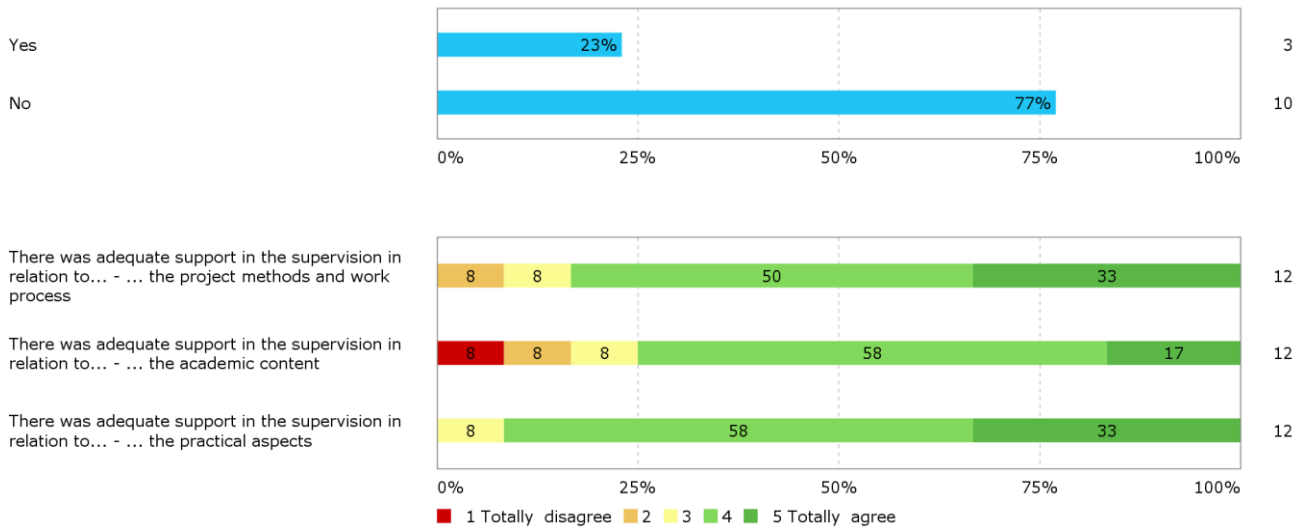
0% 25% 50% 75% 100%

1 Totally disagree 2 3 4 5 Totally agree No basis for evaluation

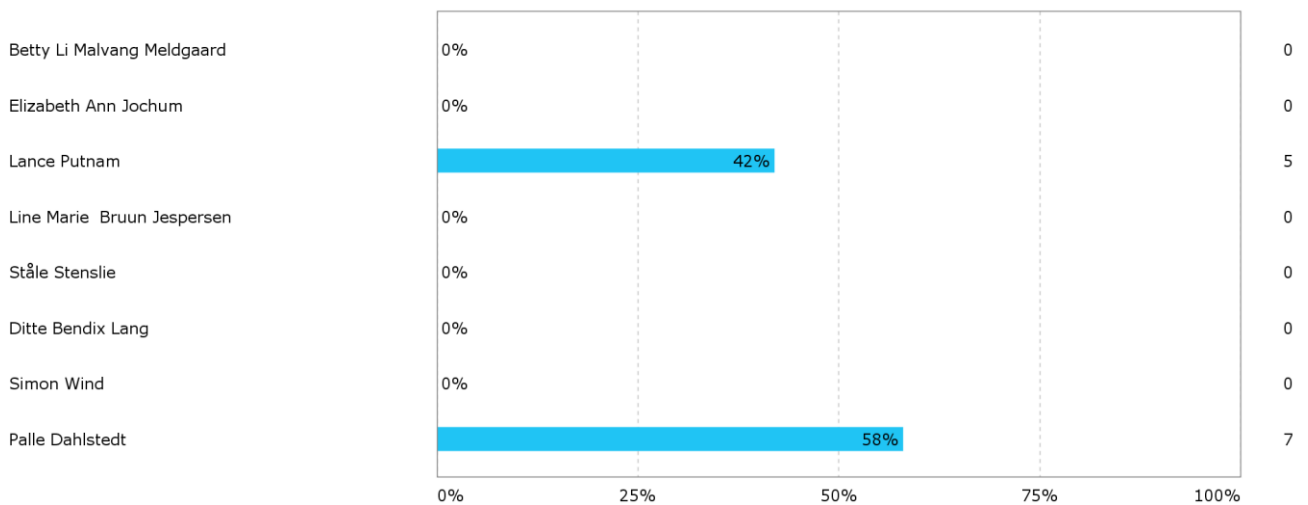
13

## Why did you work on your own?

Was the project prepared in cooperation with an external partner? (The question includes both projects 'ordered' from outside and cooperation on your/your group's initiative)

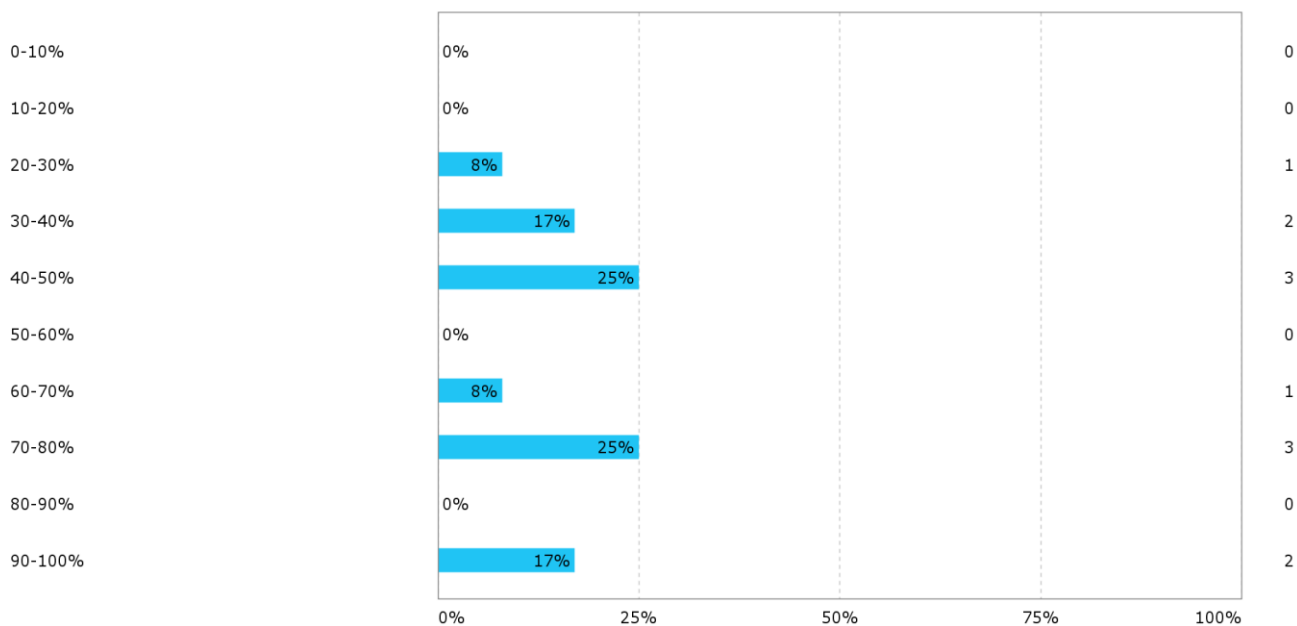


## Who was your project supervisor?

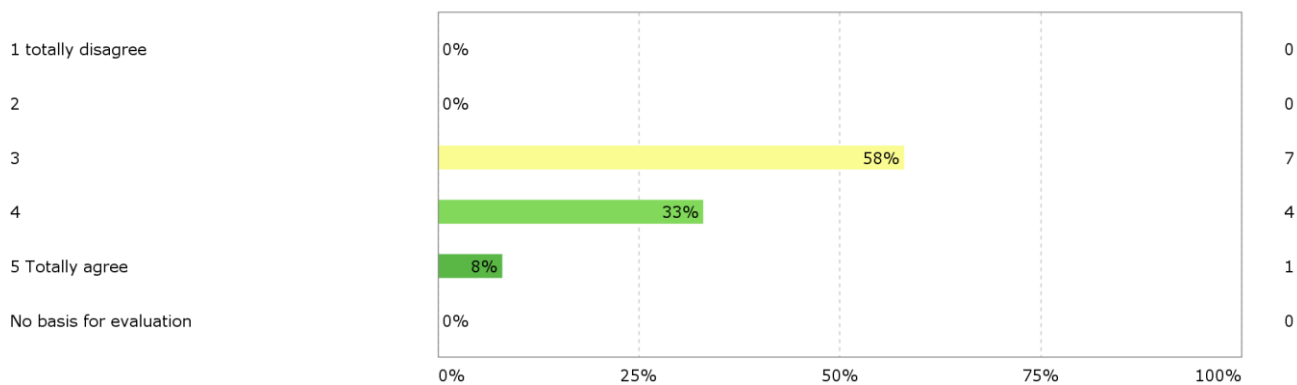




How much of the syllabus for each course/lecture/seminar of the semester did you study?

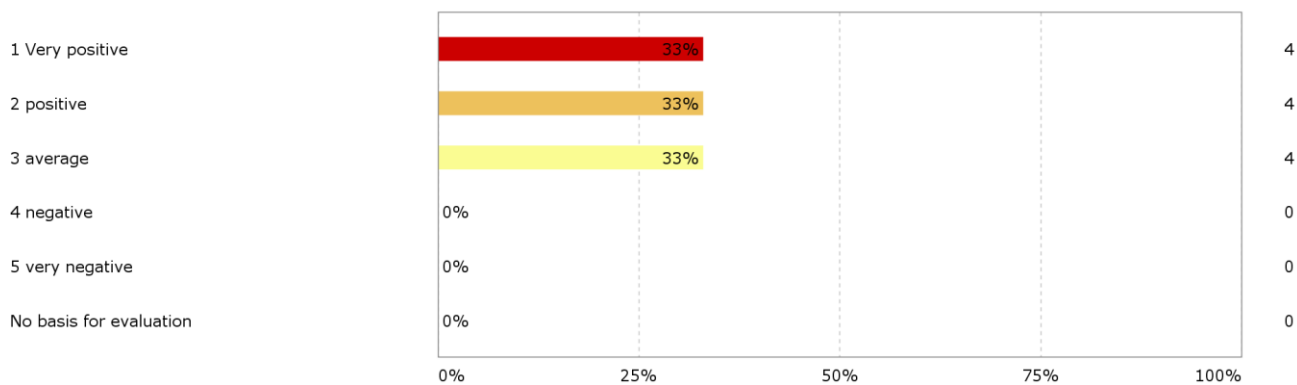


Expectation and experience of courses/lectures/seminars - I think the courses/lectures/seminars covered the semester's learning objectives



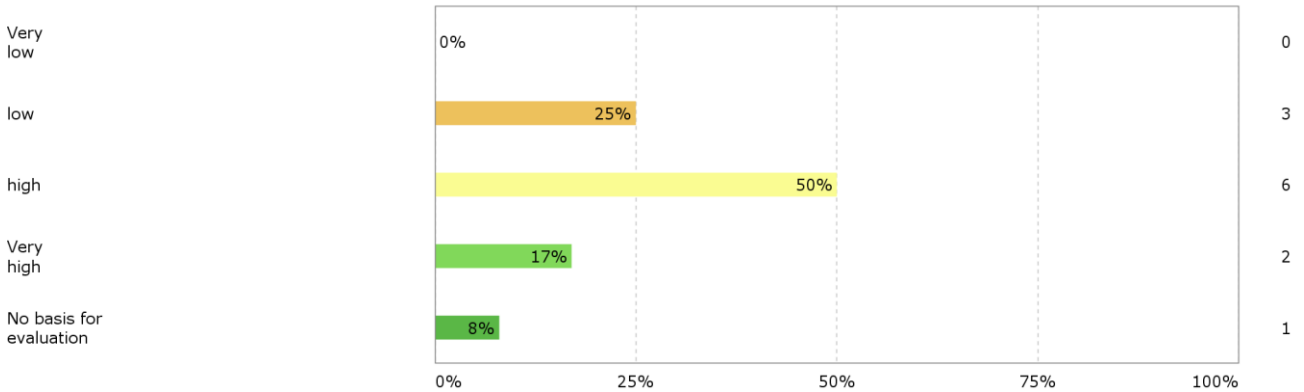
Mini projects/workshops

Some modules contain miniprojects, which in most cases requires individual work or work with smaller groups.



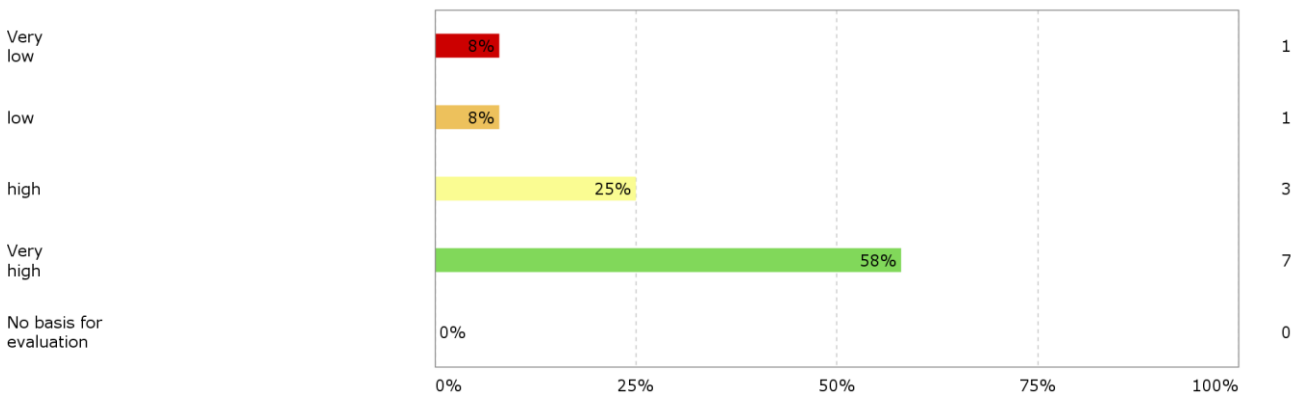
### Evaluation of learning outcome

How do you evaluate your learning outcome of the different study activities (for instance in terms of knowledge, practical skills, new/strengthened competences etc.)?  
- Courses/ lectures/ seminars/workshops



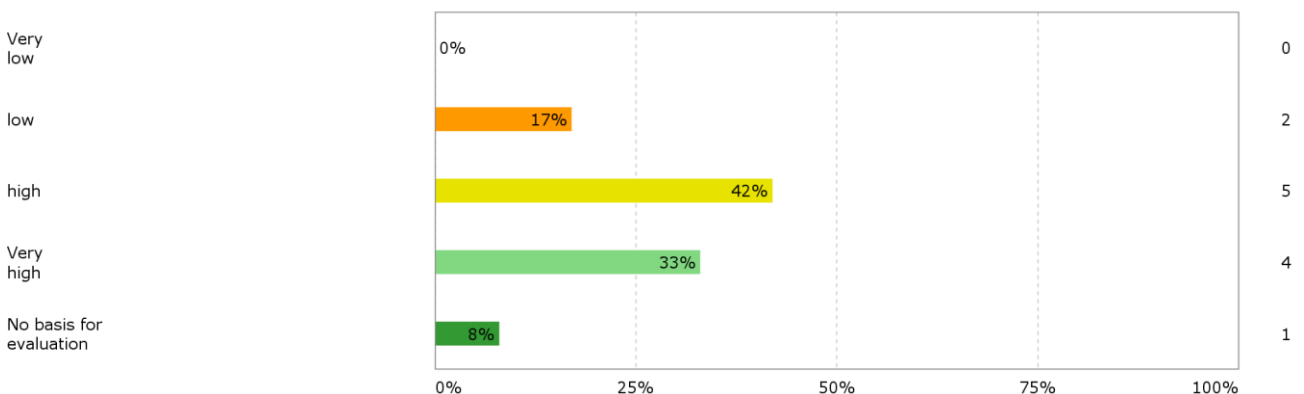
### Evaluation of learning outcome

How do you evaluate your learning outcome of the different study activities (for instance in terms of knowledge, practical skills, new/strengthened competences etc.)?  
- Project work,



### Evaluation of learning outcome

How do you evaluate your learning outcome of the different study activities (for instance in terms of knowledge, practical skills, new/strengthened competences etc.)?  
- Practical exercises/training (broadly defined)





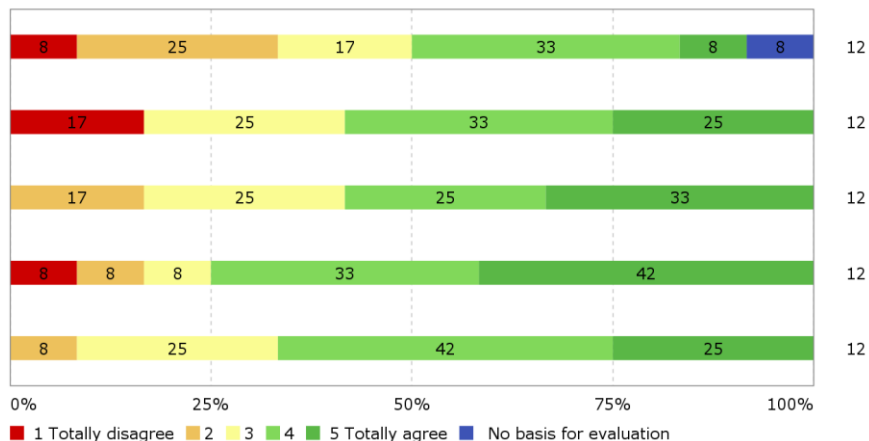
I felt well informed about semester activities, including syllabi and planning of the semester activities was satisfactory

The planning of the semester activities was satisfactory (e.g. placing and length of the study activities)

The extent of study activities initiated by the study programme was adequate

The examination plans were announced to the students in sufficiently good time

The information about practical conditions (cancellations, classroom changes, mandatory books, enrolment deadlines, etc.) was adequate.



Throughout the semester I felt well informed about... - ... extraordinary events relevant for study work (for instance relevant guest lectures, inaugural lectures, PhD-defenses, debate meetings).

1  
Totally disagree

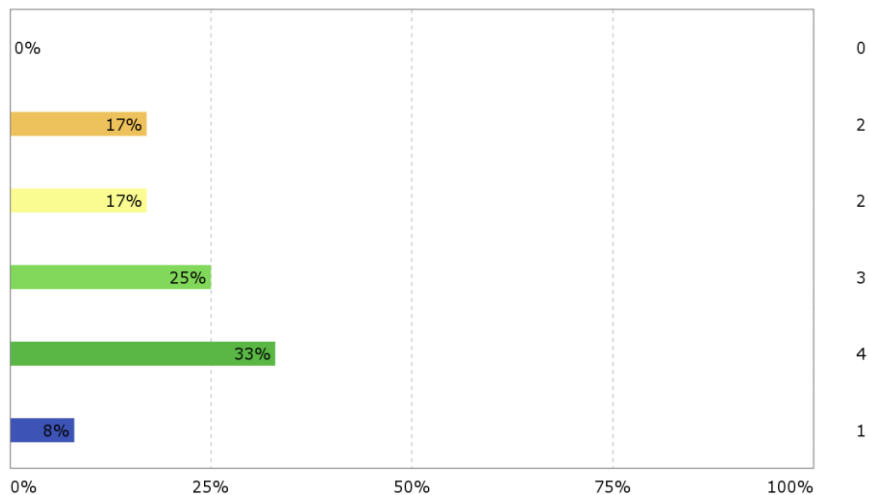
2

3

4

5  
Totally agree

No basis for evaluation



Throughout the semester I felt well informed about... - ... political conditions including the study board's work (student representatives, meeting times, agendas, etc.)

1  
Totally disagree

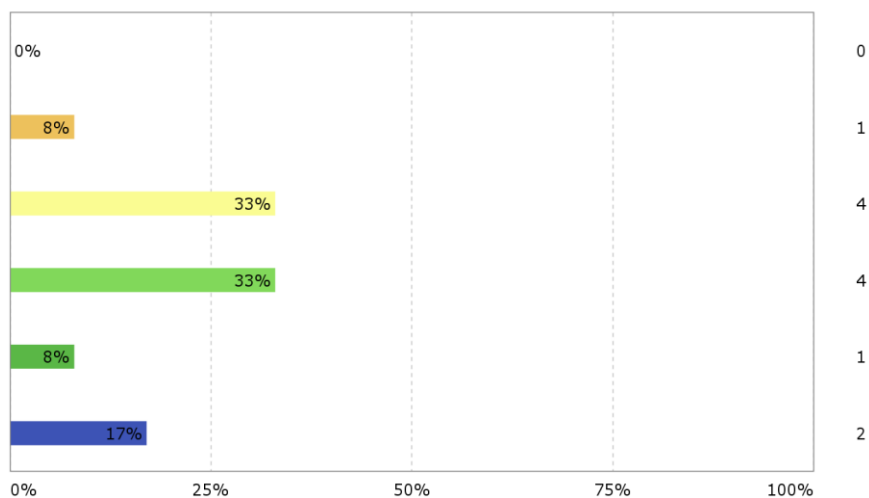
2

3

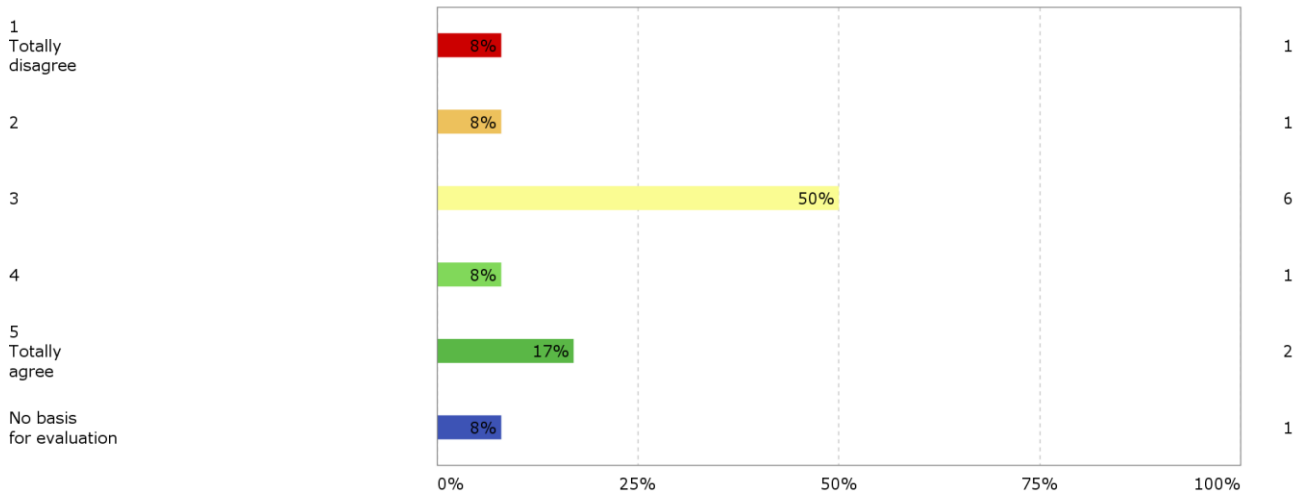
4

5  
Totally agree

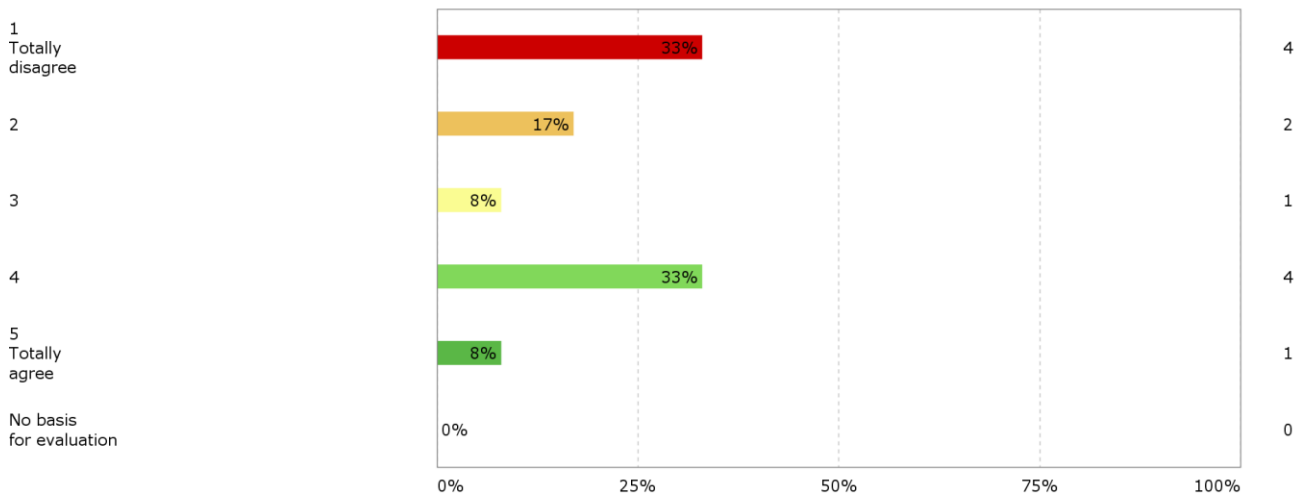
No basis for evaluation



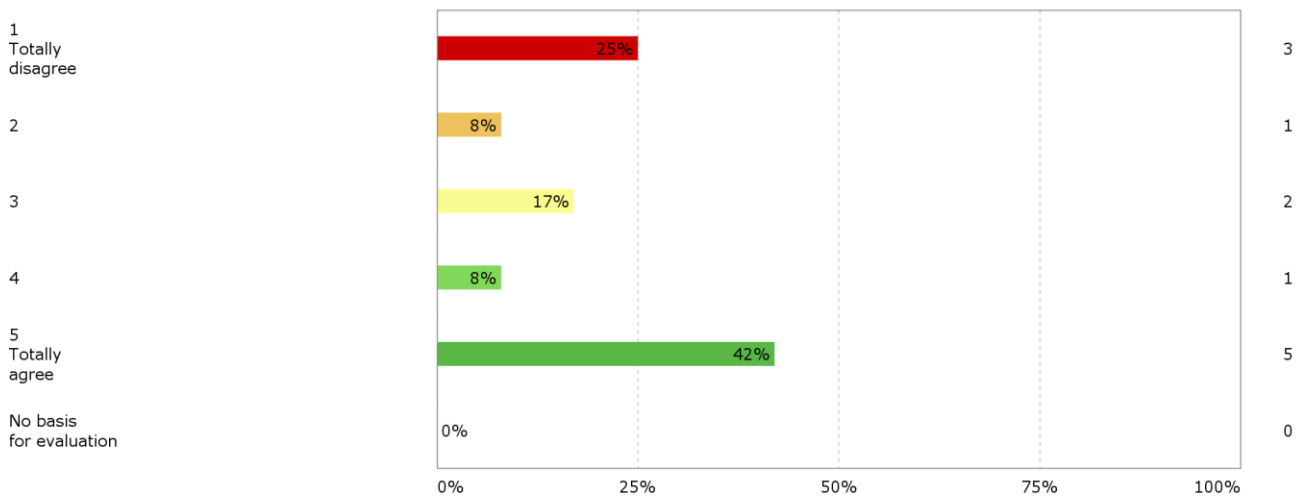
Throughout the semester I felt well informed about... - ... social activities in connection with the university (Friday bar, student parties etc.)



The physical framework for teaching was good (classrooms, computers, AV-equipment, laboratories, etc. )



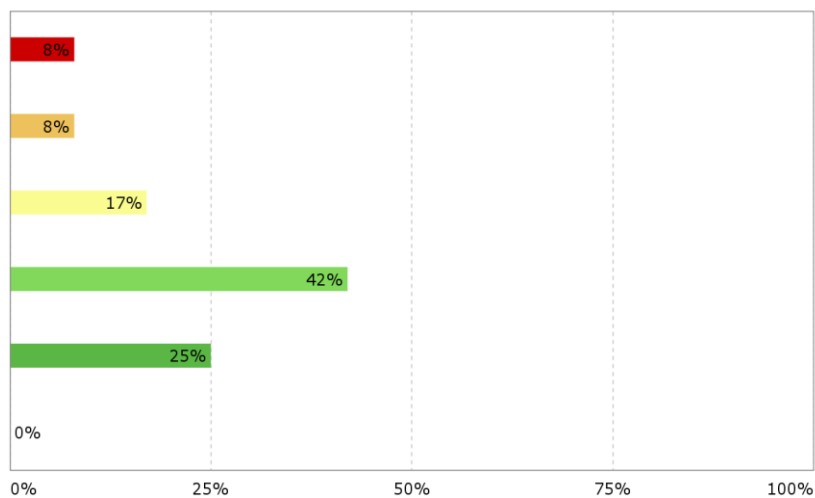
IT-facilities and services were good (for instance intranet/electronic conferences/newsgroups, home access to relevant materials and homepages, etc.)





### Moodle worked well

- 1  
Totally disagree
- 2
- 3
- 4
- 5  
Totally agree
- No basis for evaluation



### socially, the semester/group worked very well

- 1  
Totally disagree
- 2
- 3
- 4
- 5  
Totally agree
- No basis for evaluation

