

Rendsburggade 14
9000 Aalborg

OPENING DAY
THUR 4TH DEC,
2PM - 9PM

4/12/14
5/12/14

CONTINUES
FRI 5TH DEC,
2PM - 9PM
+AFTERPARTY

ART

EXHIBITION
CATALOGUE

ArT
ART.AAU.DK

ArT AUTUMN
EXHIBITION
2014


AALBORG UNIVERSITY
DENMARK



ArT
ART.AAU.DK

ART AUTUMN
EXHIBITION
2014



Art EXHIBITION

WELCOME TO THE ART - END OF YEAR EXHIBITION!
IT IS THE FIRST EXHIBITION IN OUR NEW HOME,
RENSBURGGADE 14. WE LOOK FORWARD TO PRESENTING
OUR AMAZING COLLECTION OF MORE THAN EIGHTY
TALENTED INDIVIDUALS. BUT THEY ARE NOT WORKING
ALONE. THROUGHOUT THEIR PROBLEM-BASED-LEARNING
THEY WORK TOGETHER TO ARTICULATE ARTISTIC PROBLEMS.
THEIR ARTWORKS REPRESENT ANSWERS IN AN EXPERIENTIAL
FORM. THE WORKS ARE OFTEN INTERACTIVE, BUT ALWAYS
CHALLENGING CONVENTIONAL APPROACHES TO PROBLEM
SOLVING AND KNOWLEDGE BUILDING. THIS IS ONE OF THE
MANY WAYS THE ART EDUCATION CONTRIBUTES TO THE
UNIVERSITY'S POSITION IN THE CONTEXT OF A TROUBLED
SOCIETY. AND WE LIVE IN A TIME WERE WE INDEED NEED
BETTER AND SMARTER SOLUTIONS.

NOW, OUR STUDENTS DO NOT ALWAYS HAVE A FINAL
ANSWER. AND IF THEY SO "FAIL", THEY LEARN THAT THEY
ARE ALLOWED TO FAIL AGAIN - AND TO FAIL BETTER BY
EACH TIME. AT ART WE PUSH FORWARD TOWARDS AN EVER-
EXPANDING HORIZON OF ALTERNATIVE FUTURES. WITHOUT
LEARNED ALTERNATIVES OUR SOCIETY WILL STIFFEN IN
THE DOGMA OF THE ABSOLUTE. ART MUST BE SEEN AS A
BOUNTIFUL GARDEN FULL OF RIPE OPPORTUNITIES AS TO
HOW WE CAN TACKLE THE FUTURE.

I HOPE YOU ENJOY THIS EXHIBITION AS MUCH AS I WILL.

PROF. STÅLE STENSLIE, HEAD OF STUDY

04/05/2014
05/12/2014

Project themes

THE SEMESTER THEME FOR ART1 IS SCULPTURE AND TECHNOLOGY: TURNING SCRAP INTO INTERACTIVE/KINETIC SCULPTURES. WORKING WITH HUMANITIES ENORMOUS AMOUNTS OF WASTE AND POLLUTION, IT IS THE STUDENT'S MAIN ASSIGNMENT TO ADDRESS THIS PHENOMENON FROM AN ARTISTIC STANDPOINT.

THE SEMESTER THEME FOR ART3 IS DYNAMIC ART AND TECHNOLOGY: HARMONIC UNFOLDING. HARMONICS, BEING A FUNDAMENTAL BUILDING BLOCK OF MOTION, PLAY AN IMPORTANT ROLE IN BOTH THE SCIENTIFIC AND ARTISTIC INQUIRY OF DYNAMIC SYSTEMS.

THE SEMESTER THEME FOR ART5 IS NARRATIVES AND INTERACTION - AND HOW IT CAN BE TRANSLATED INTO ART AND TECHNOLOGY PRACTICES. A PRIMARY FOCUS IS THE USE OF ARCHIVAL MATERIALS AND DIGITAL DATABASES IN COMBINATION WITH NARRATIVE STRATEGIES AND VISUAL ART.

ArT projects

LIST OF THE ART PROJECTS
AT THE EXHIBITION

SEMESTER 1

HAND OF GOD	6
Into the Mind	7
New Nature	8
Can	9
Marvin	10
PhytoPlastic	11
Ghosts of a Gone by Era	12

SEMESTER 3

People Poop	13
CREATivE Patterns	14
untitled	15
Persona	16
Disconnexion	17

SEMESTER 5

Show me a story...	18
The Secret Harbour	19
Story Time	20
[ver-uh-si-mil-i-tood]	21
Earth Cancer	22
The Archive of Dreams	23
Memories within the City : Intimacy	24
EXposed	25

Semester 1

HAND OF GOD

By Radu Albutiu, Jens Bugay-Hougaard
& Benjamin Hugo Lager



What is an arcade machine supposed to do?
Who is God?
Can women hate babies?
How can you get more juice out of your children?

An interactive installation that places the spectator in a challenging situation, with core elements of humour and surprise.

Into the Mind

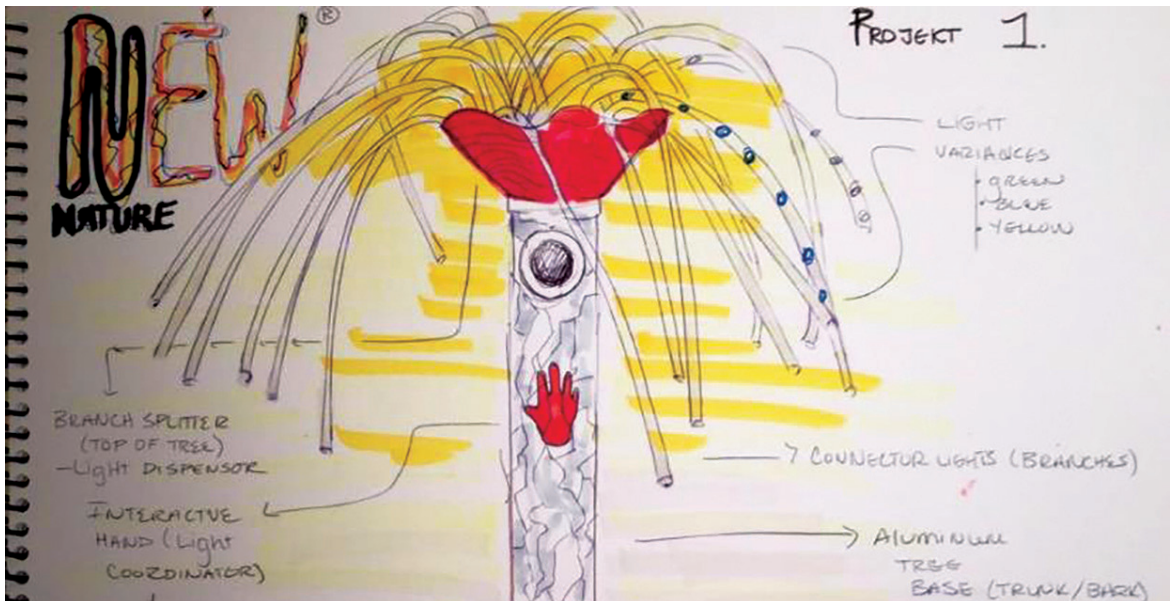
By Maria Husarcikova, Casper Christiansen,
Malthé Jensen, Cecillie Lundsgaard,
Emma-Ella Petersen & Cody Anderson



Into the Mind is made to generate stress. As an abstracted depiction of the human brain the viewer is invited to explore the sculpture, both around the exterior and from within. Inside, one will find man, trapped within the confines of his own mind. Placed in solitude he rests in the center, encircled by the stressors of the world outside.

New Nature

By Henrik Varas Lopez Nicolaisen, Merle LaPorte Petersen, Bianca Larsen Andersen, Kamilla Nielsen, Brandon Bjerre & Nadia Ali Hansen

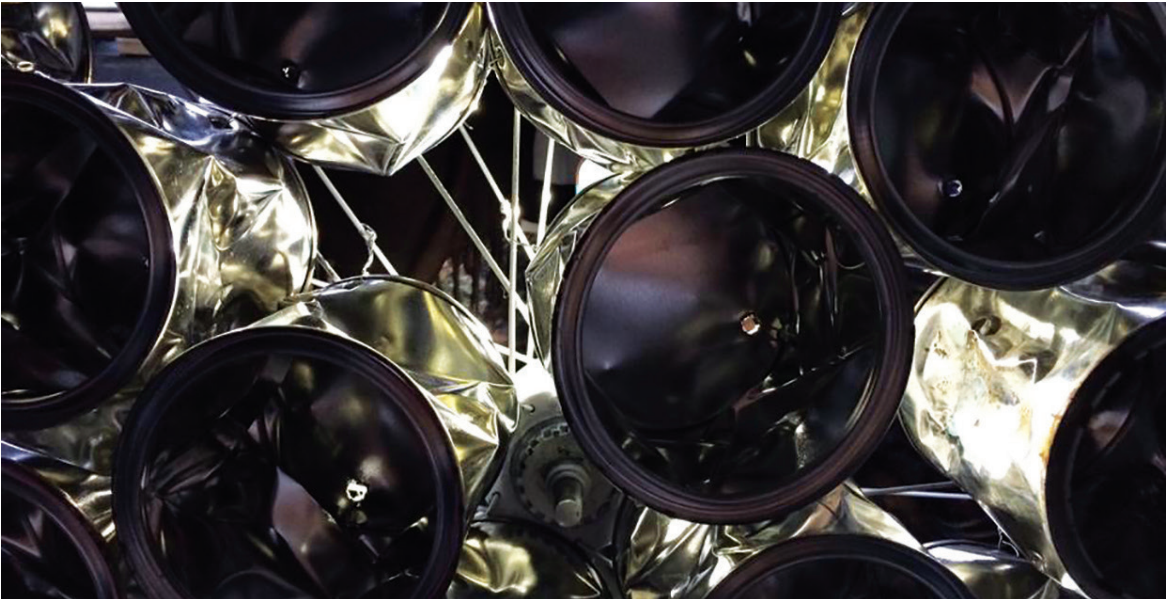


Our sculpture is an artificial tree made out of recycled material. We have used metal and plastic tubes of different sizes to construct the tree.

The tree reacts to human interaction by movement and touch. The idea behind the tree is to play with people's perception of nature, and give people an experience and understanding of how nature is becoming more artificial. We want to see if people are aware of how nature is changing and if they know that humans are the reason for it. We hope you like our sculpture.

Can

By Christina Anine Cliff, Camilla Brix Andersen,
Kristine Sundwall, Ida Lomholt, Sisse Kappelgaard
Bech & Ida Bruhn Mikkelsen



Through our semester project we want to bring metal waste into focus. The cans we found at Uniscrap were our source of inspiration to create the sphere. We have used bicycle wheels, which created a stable skeleton for the cans to be attached to.

Metal is recyclable, but it is often discarded when it has served its original purpose. We want to show how it can be reused in a new way. The cans have a reflective surface and we want to utilize this by putting light inside the metal sphere to enlighten our subject.

Marvin

By Rhea Jayachandran, Sara Gøtghen, Suvi Pölönen, Tenna Hansen & Catja Agnstoft



Marvin is an interactive sculpture made from recycled materials such as a drum, chicken wire, and wood. It explores humans' intuitive reaction towards specific hand gestures. Marvin attempts to evoke a humorous response through a series of interactions that solve a puzzle. Marvin has the capability to give both positive and negative feedback, depending on how he is interacted with. What will happen if you interact with Marvin?

PhytoPlastic

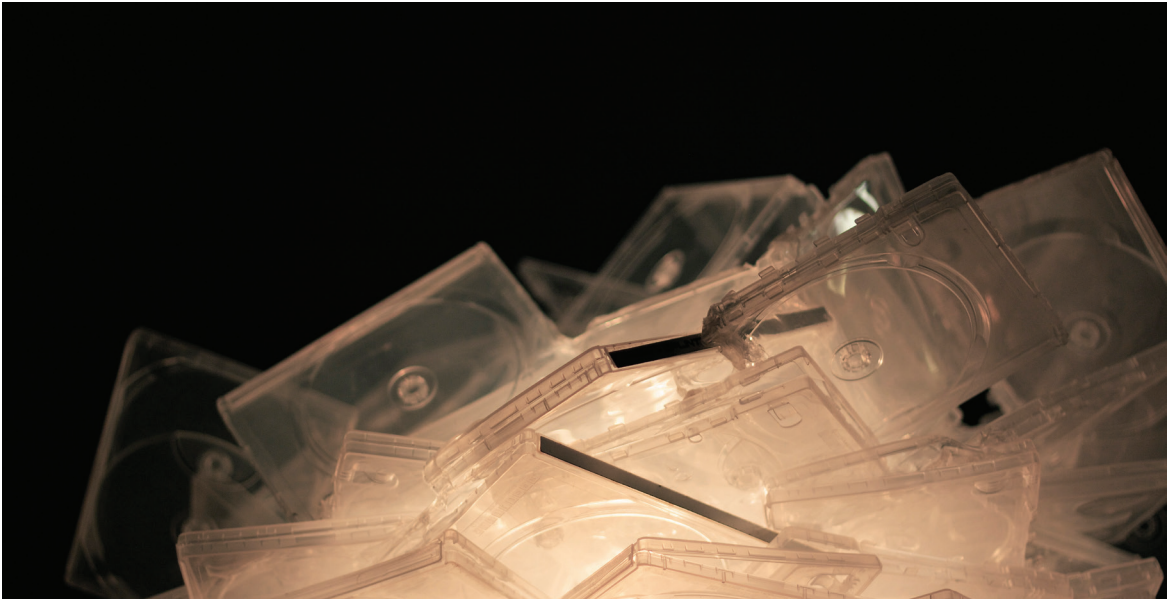
By Imre Petkov, Malte Herold, Simone Bøgelund,
Lars Buchholtz, Randy K. Heath & Signe Thyrii



Phytoplankton is a bio-luminescent species of plankton living in almost all oceans. Plankton is a natural food source for many marine life species. Because of marine plastic pollution, plastic is broken down into microscopic pieces and therefore fish mistake the micro sized plastic for plankton. The oceans are exposed to a real danger, a danger that is destroying marine life. In this artwork we want to raise the awareness of this global problem by expressing it through a light installation that emulates the behavior of phytoplankton and uses the plastic as the main material.

Ghosts of a Gone by Era

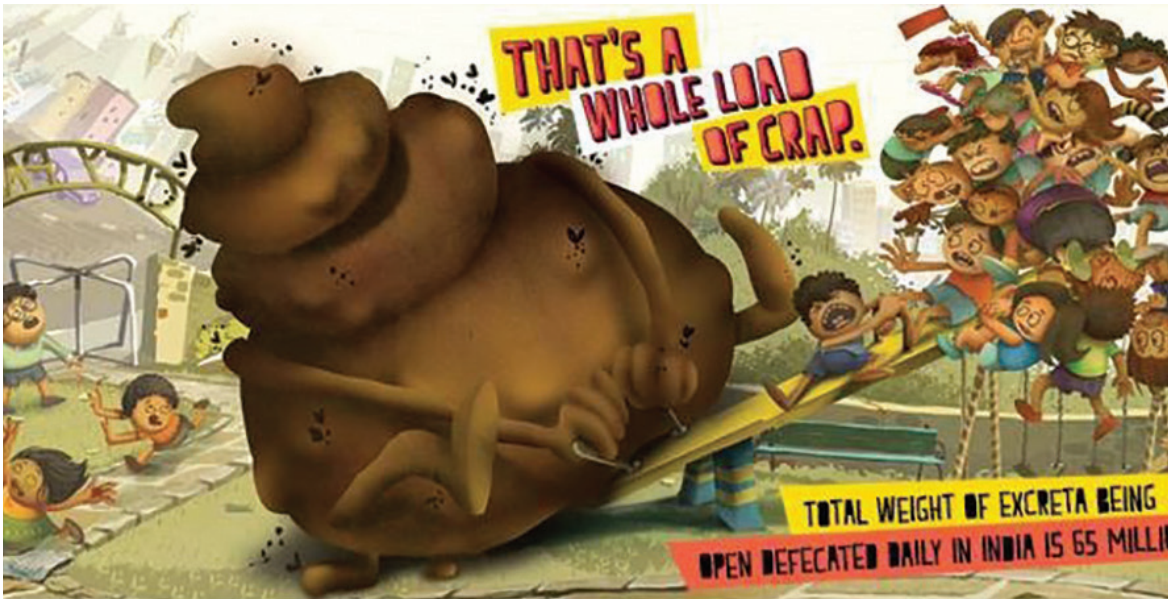
By Joëlle Dubé, Anne-Line Nykjær, Mads Lind
& Nanna Klith



When going to the scrap yard we were drawn to this tremendous white mountain of DVD-cases. With our sculptural installation we are inviting the viewer to reflect upon the transformation from the analogue era to digitalism. What are we leaving behind when losing the tactility of DVD's, books and CD's? Are we losing anything apart from nostalgia? In a landscape made out of DVD-cases, ghosts are emerging, trying to get the attention of the viewer. By melancholy, horror and screams they are doing all they can to be noticed by the audience while trying to survive the digital era.

People Poop

By Brinthan Pushparupan, Daniel Hristov, Liva Stubbe , Magda Hertzberg & Maria Gonzalez

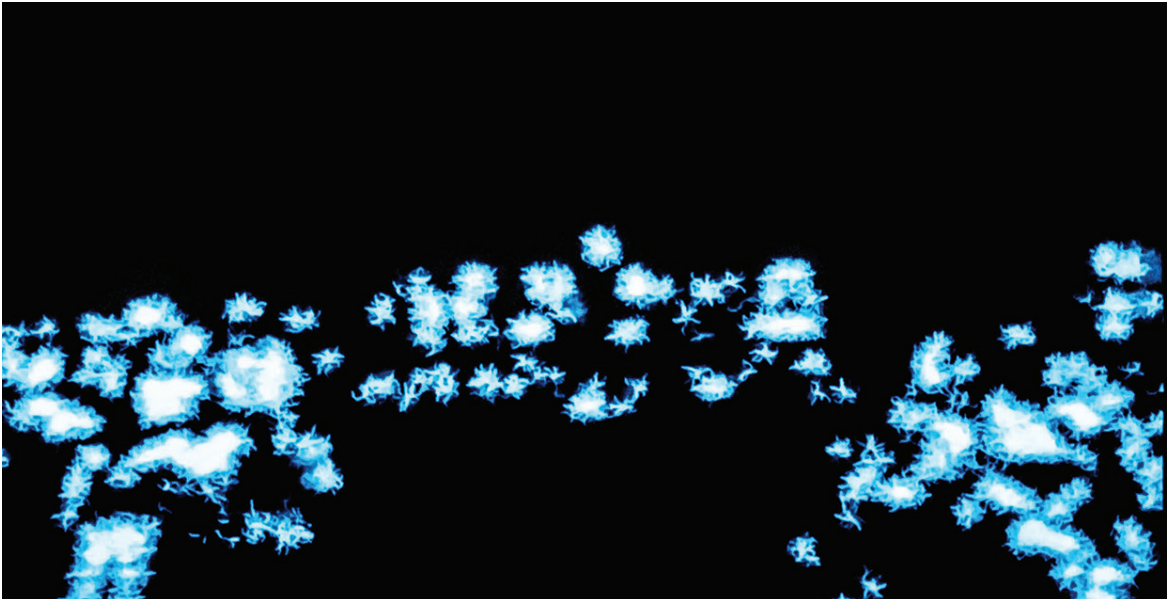


Close to 594 million which is 48 per cent of population in India practices open defecation. That's half the population dumping over 65 million kilos of poo out there every day. Half the population doesn't use a toilet while the other one, accepts it. We simply accept India as it is. We are part of the issue, part of the acceptance. That is the problem and there is a solution: Poo2Loo, a campaign funded by Unicef. However, we believe they are going about it in an inefficient way and that is why we want to suggest a new strategy to raise awareness; through interactive installation art.

So, if you give a shit about this issue, then do not just scrunch up your nose and walk away, visit our installation!

CREATivE Patterns

By Alf Andersen, Frederik Gøeg, Grith Henriksen,
Louise Wunderlich & Nikolaj Andersson



'CREATivE Patterns' is a projection art-piece by Group 2 from 3rd Semester. The installation monitors the ArT exhibition in the hall and projects an artistic representation of the movement on the facing wall in the yard.

The project is inspired by human movement, in the main hall of the new CREATE building, and how it can be used to create patterns. Human movement patterns can often seem chaotic and random, but when carefully processed, these patterns can become a visual representation that transcribes the dynamics of the hall onto the white façade of the CREATE building.

untitled

By Jean-Francois Robin, Paulina Melinauskaite,
Nele Kadastik & Dovile Sausdrovaite



We investigate the correlation between construction and destruction within movement. The two opposites often create sublime harmonic relations. Our attempt will be to translate this concept by proposing different graphical scenarios.

We unfold this idea by using 3 layers: the digital representation (video, live generated patterns & sound), interfering filter (water) and screen (result).

The installation will reveal numerous scenarios where each scenario will convey a different view on the connection between destruction and construction.

Persona

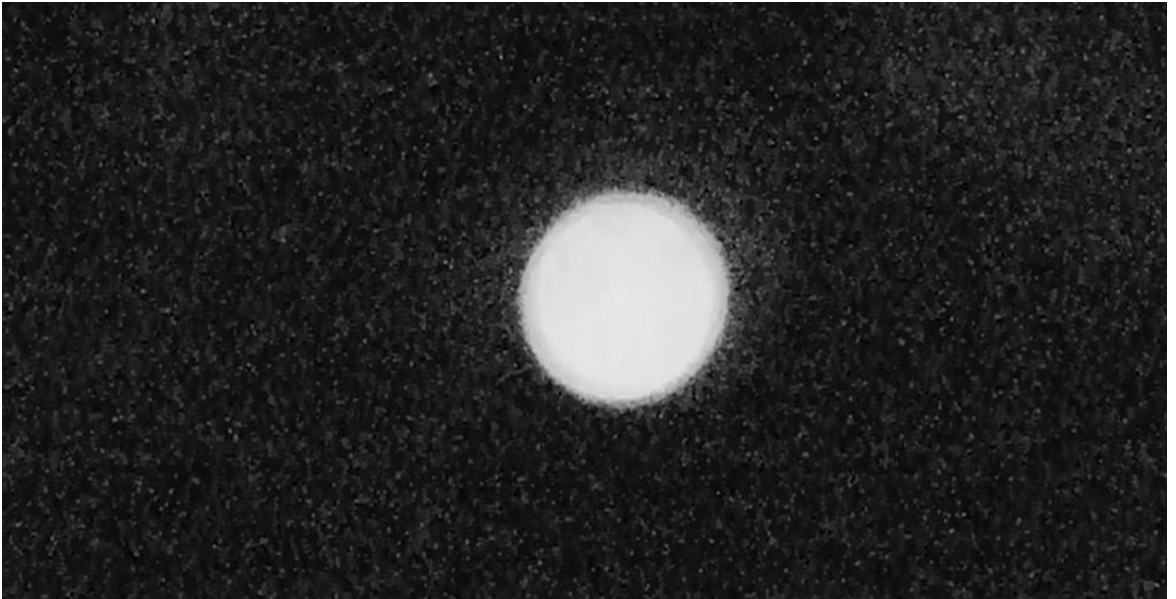
By Signe Smedegaard Frderiksen, Kirstine
Danielsen, Rebekka Kolding Borum & Jeroen Derks



This performative art installation explores the boundaries of human empathy and interaction. When entering the space one is confronted by an array of faces avoiding eye contact, but still acknowledging your presence. In this phase of the installation a foundation for the relationship between you as the spectator and the subject is created. Moving deeper into the installation, you are engulfed by visual projections and audio whilst being challenged by the boundaries of human empathy.

Disconnexion

By Shivani Luithle, Allan Enevoldsen,
Mette Larsen & Dimitra Bavea



This is an experiment of space perception. Arisen from heightened awareness in the dark, we aim to tickle your intuits and perplex the relationship between sight and hearing. You are isolated from the outside world, with common communication and familiarity extracted from play. Confronted by the unknown, you are also met by a consideration of yourself in respect to it all. In a lost sense of time and space, you are free to behave and experience as you want, allow yourself to be engulfed by the confusion.

Show me a story...

By Anne Bonde Bakland & Carina Spure Nielsen



"Show me a story..." is an interpretation of poems illustrated in different ways. The poems are portrayals from a life in a bar in Aalborg. The inspiration for the medium used to show the illustrations is taken from the early history of cinema. This is our way of giving the poems new life in a contemporary context. By using a modern take on an outdated media the poems will be given a new sense of humor.

The Secret Harbour

By Matias Carbone, Daniel Kamp Kittow
& Martin Ljungstrøm Nielsen



The Secret Harbour is an interactive, conceptual media installation which invites for an intimate narrative of stories related to Aalborg waterfront from the past. Come and experience the voice of the harbour which unfolds untold and sad tales that few to none know existed.

This installation is taking place on 2nd floor in a small hidden room, and will include reflected light and elements of the actual past of Aalborg harbour and Aalborg Archives. Through these reflections, the old tales from the past are given life through a renewed voice of the Aalborg Water, and can be experienced in The Secret Harbour.

Story Time

By Andreas Fjordsøe Jørgensen, Julie Rasmine
Helbak & Nanna Vester Feilberg



Welcome to an alternative exhibition of extraordinary historical events and trivia! Many interesting facts and stories get lost in the sea of information over time, but this project brings a selected few back into the spotlight. Enter a modern museum experience and explore surprising stories about celebrity encounters and occurrences in engaging new ways. Discover the truth for yourself in this fragmented multimedia installation.

[ver-uh-si-mil-i-tood]

By Teis Kronborg, Emilie Holst Egebo
& Nanna Maria Kofod Schmidt

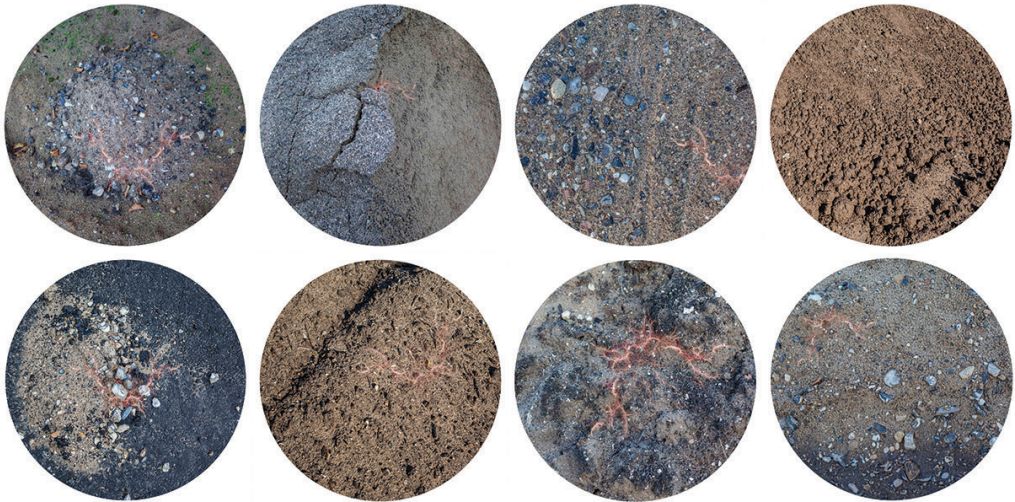


This installation is based on a true story taking its departure from the Aalborg Archive. We present materials found at the archive concerning the history of Aalborg in the early 1850'ies with a particular focus on the chain of events leading up to the covering of the canals.

Come and join our investigation, we invite you to co-build the narrative of why the canals of Aalborg were covered - who was Iris, why did so many people die and in what way was Martin Møller involved?

Earth Cancer

By Zane Cerpina & Julia Spicina



facebook.com/earthcancer

instagram.com/earthcancer

You have heard of Ebola, ozone layer depletion, global temperature increase, ocean pollution and deforestation. But we bet that you have not heard much of Earth Cancer before tonight. The reason is that the scientific community was convinced that they had the situation under control, but recent discoveries have revealed that this phenomena is developing much faster than ever before predicted. What does this mean? What is the cause? Might it have a devastating impact on our planet and lifestyle? Enter the room and investigate the situation, you can also take part in the community by visiting our website www.theearthcancer.com and other social media. Get involved and let's cure the World together!

The Archive of Dreams

By Freja Berger Petersen, Simon Laigaard Krabbe
& Lasse Agner Madsen



The incredible experience of watching your brain at work. -To witness your greatest dreams materialize right in front of you, creating particles, connections, turning into abstract landscapes. -To truly experience your dreams being extracted, and stored in the archive. -Suddenly, to be able to hold between your hands a representation of something otherwise as intangible as a dream. That is amazing. Magic even.

The installation, 'The Archive of Dreams', originally took place at 'Aalborg Stadsarkiv' on Nov 27. What you see during this exhibition was generated and recorded on this occasion. The installation will re-open at 'Aalborg Stadsarkiv' on Dec 11 between 16:00 and 18:00. See you there!

Memories within the City: Intimacy

By You Jin Choi



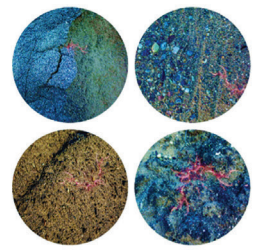
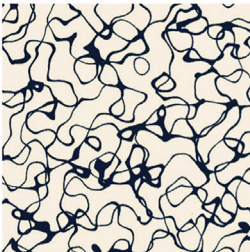
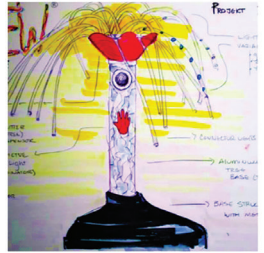
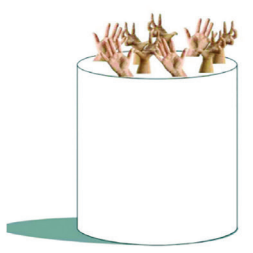
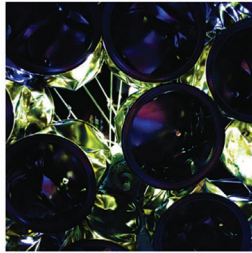
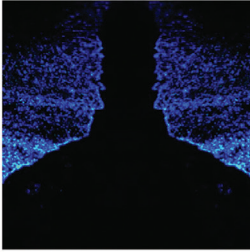
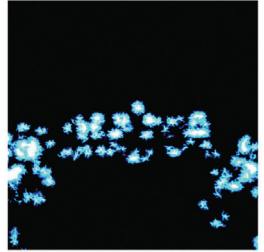
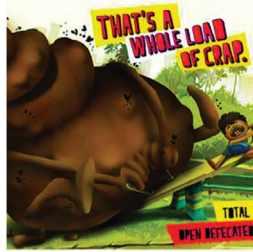
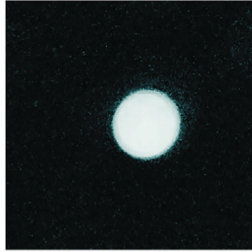
Walking in the city, I felt as if I was walking inside an image, not in a real space. My artistic problem was to figure out where this unreal sensation was coming from and how to deal with it. At first, I approached the problem semantically; the hypothesis was that I was lacking vocabulary about the city within my mind and that led to a void sensation. In the Aalborg archive, there were a lot of recordings under the category of “Erindringsbånd”. The intimacy within the archive gave me an insight; what gives space life and reality is the accumulation of commemorative intimacy. I wish my project to be a tribute to the intimate co-memory of this city space so people can reaffirm their reality and life within the space.

EXposed

By Sally Grindsted Nielsen & Anja Christoffersen



Through a combination of the mediums of video art and performance art EXposure is an investigation into how the mediated and the real affects us. Subjects like Ebola, cholera and deathly diseases are brought to light. All subjects that is considered tabu but also subjects that fills the media of today. And this is the question. These horrible pictures are show every day in the media but what happens when they suddenly become real?





ArT
ART.AAU.DK

ART AUTUMN
EXHIBITION
2014





ART

ArT
ART.AAU.DK

ArT AUTUMN
EXHIBITION
2014



AALBORG UNIVERSITY
DENMARK